



Sichbo PVR is © Copyright 2007 - 2008 [Sichbo Interactive](#)

Click [here](#) to download

Homepage: <http://pvr.sichbo.ca/>

User Forum: <http://pvr.sichbo.ca/YakidyYakYakYak>

FAQ: <http://pvr.sichbo.ca/FAQ>

Click [here](#) if you're AWESOME

Congratulations if you are reading this you are about to experience the best PVR software.

### System Requirements:

- Windows XP SP1+ / 2003 Server<sup>†</sup> / Vista\*\*
- [Microsoft .NET 3.5 Runtime](#)
- [Windows Media Player 10+](#)
- At least 128mb Video Memory\*
- 512mb RAM

\* We're using Windows Presentation Foundation (WPF) so it requires a fairly beefy Accelerated video card. You can revert to using Video Mixing Renderer (VMR), but it looks decidedly less awesome.

\*\*Please download [proppage.dll](#) if you are running Vista and register it using regsvr32.

† Windows 2003 users, you need [StreamBufferEngine \(SBE\) files](#).

\*\*\*Please do not ask any questions about h.264 support. Sichbo PVR is based on Microsoft's stream buffer engine. At this time SBE does not support h.264 content. Sorry, direct your frustration at the MAN.\*\*\*

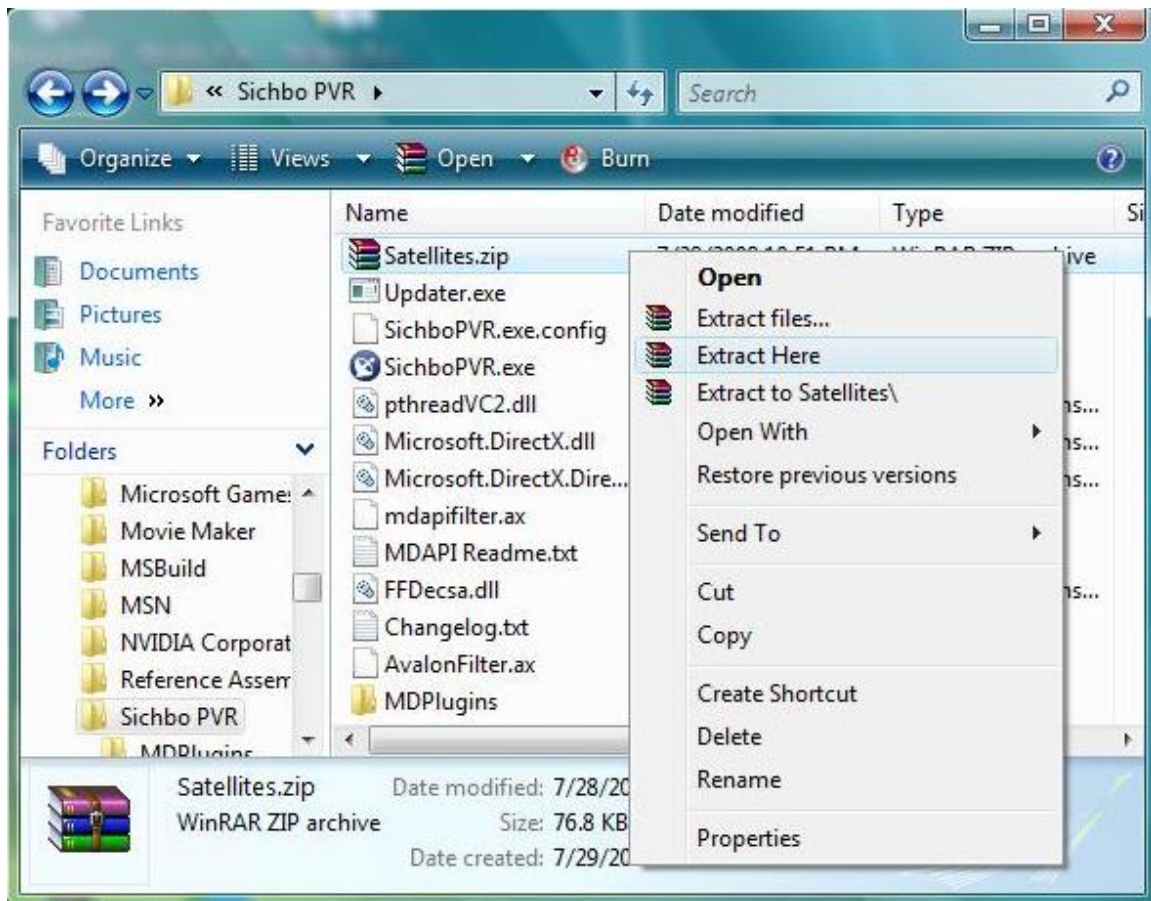
For a list of supported devices and features please visit the [SichoPVR homepage](#).

\*\*\*Please note that if any of the steps below fail you will be prompted to send the author of Sichbo PVR a report. This way the author can attempt to fix issues you encounter during setup. Sending the report does not guarantee anything, but is the first step to a resolution.\*\*\*

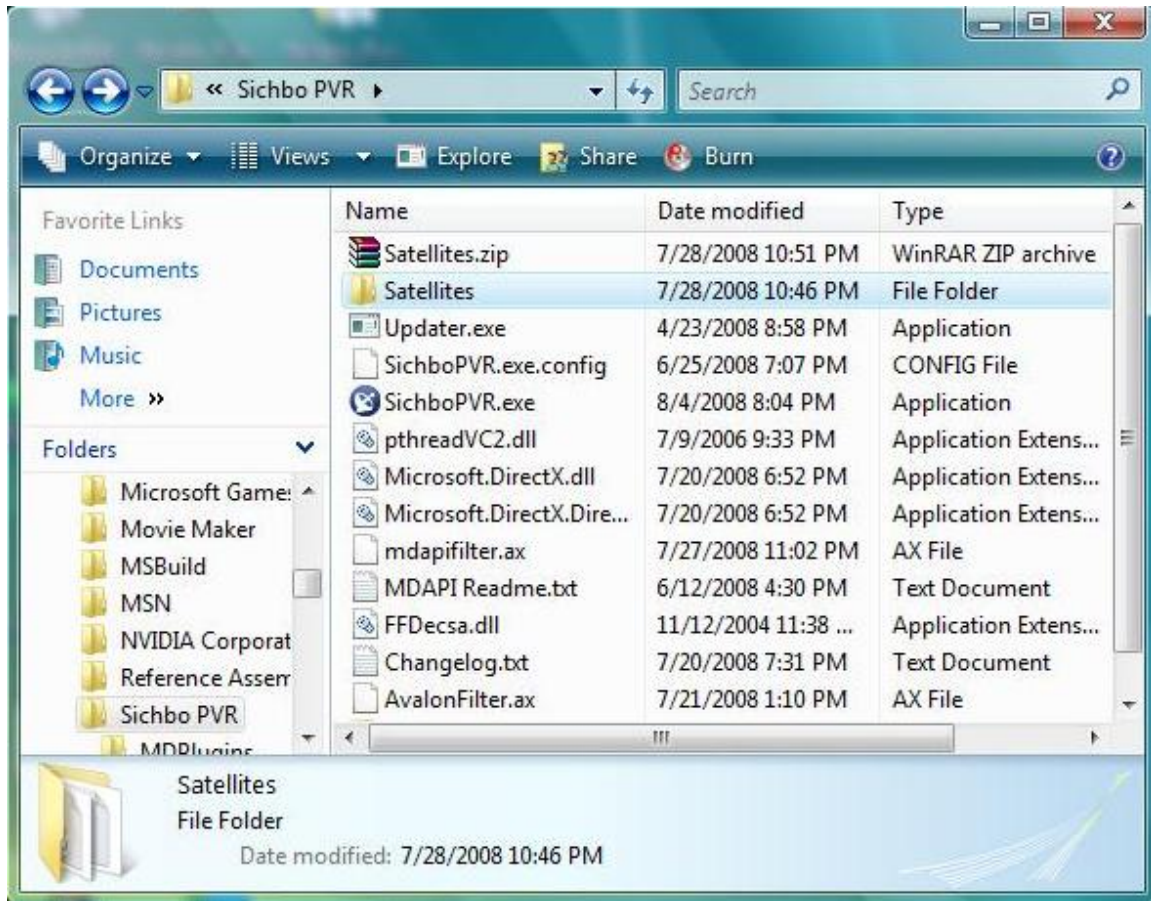
The default installation path is “%system root%\programs files\Sichbo PVR\SichboPVR.exe”.

However before we run the executable it is best to update your satellites.zip file which is located in “%system root%\programs files\Sichbo PVR\”. This file contains the .ini files; we are all familiar with (hopefully), which contain the tuning information. If you do not have a compression utility installed on your PC now is the time to get one. I recommend Winrar. You can download it at [download.com](http://download.com). Go there and type “winrar” (w/out quotes) in the search box and then select “download now”. And last, install the winrar program.

Now go to the directory where you installed Sichbo PVR. The default installation path is above. Look for the file named satellites.zip. And do the following:



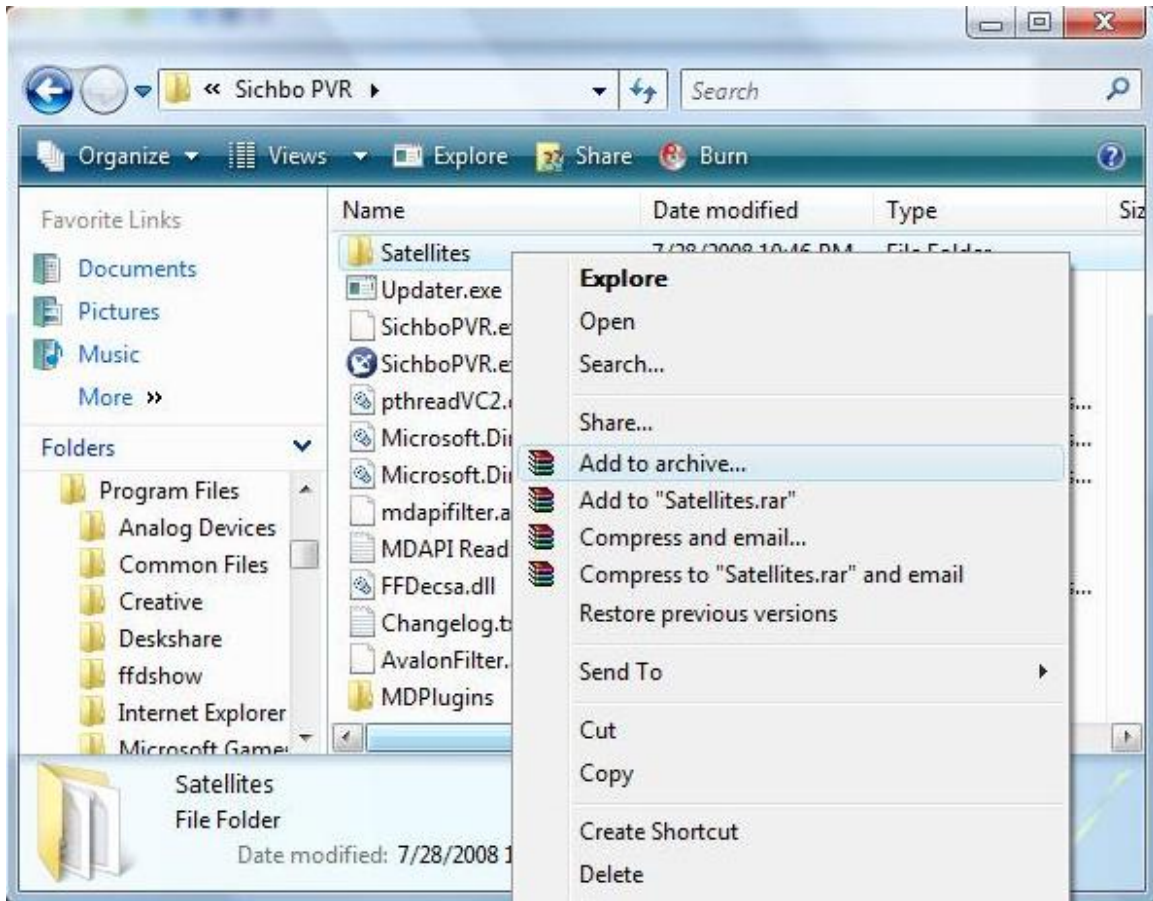
Right click on the file and select “Extract Here”.



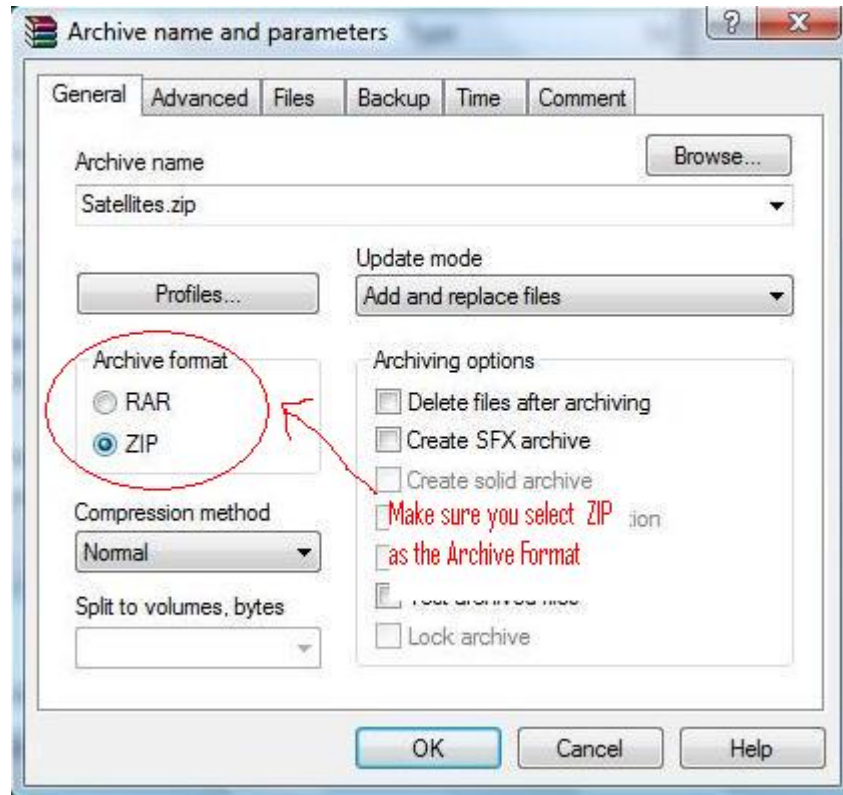
Note that a new folder named Satellites has been created.

The transponder .ini files are located in the “Satellites” folder. Edit them as you wish. For example I have Dish Pro LNB’s so I must adjust the transponder frequencies so I can tune both polarities.

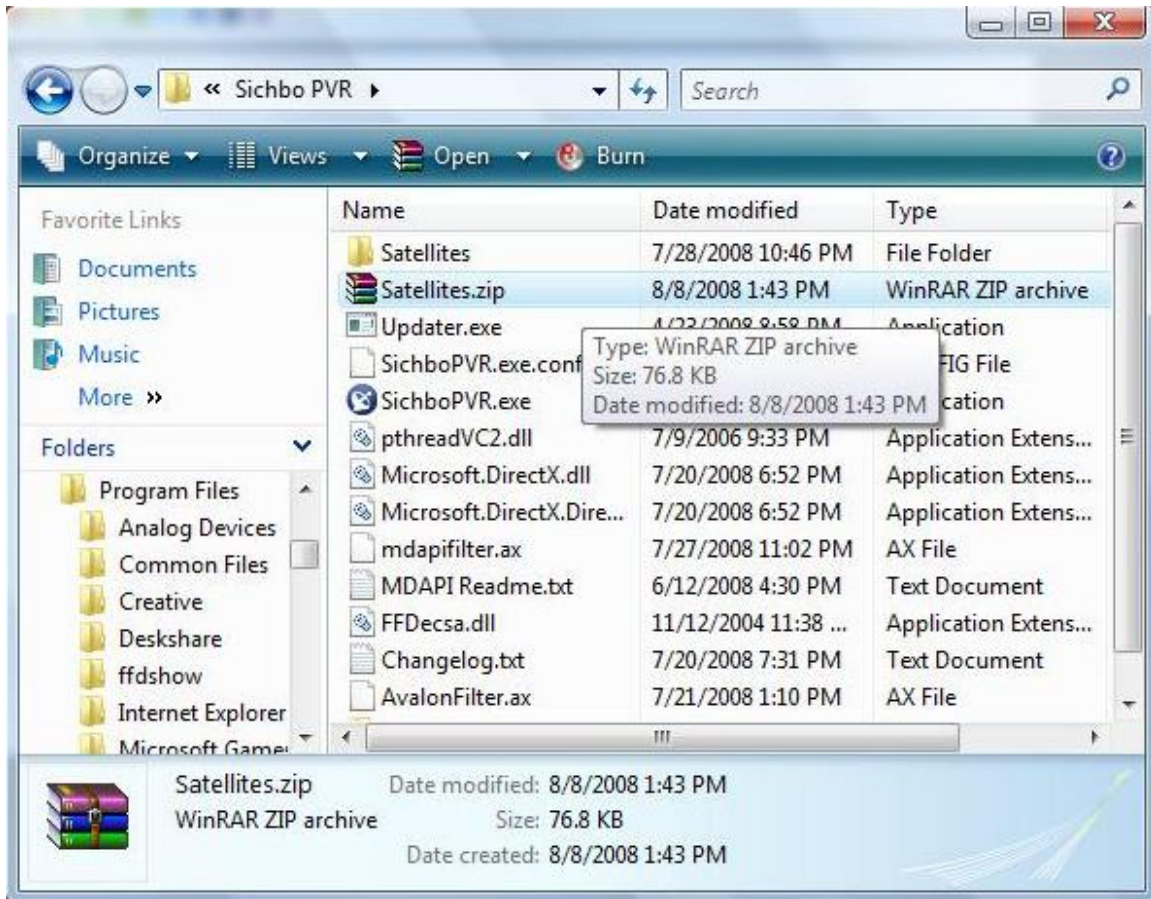
\*\*\* At this point you should delete the “Satellites.zip” file because you will be creating a new one\*\*\*



After you make changes to the transponder files right click the “Satellites” folder and click “Add to archive.”



This window will appear next. It is very important that you change the Archive format from RAR to ZIP in this window. The program's default setting is RAR format. **YOU MUST CHANGE IT TO ZIP.**



If you did everything correctly a new “Satellites.zip” file will appear in the directory. At this point you are ready to start the setup process. Good luck.

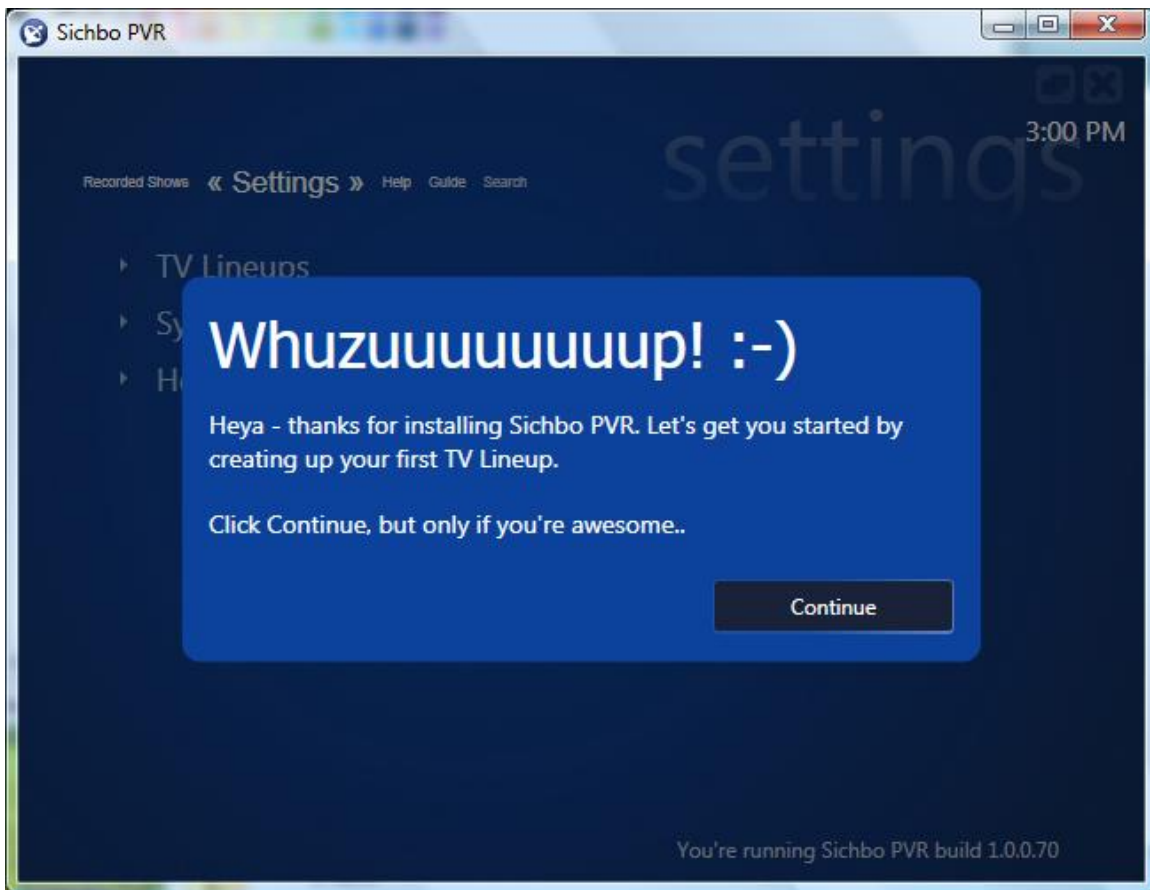
\*\*\*Please note that the author of Sichbo PVR and the author of this setup guide do not condone or support the piracy of satellite signals. Decryption of such signals is beyond the scope of this guide.\*\*\*

“Sichbo PVR does not officially support the MD API, however it will attach "Agarwal's MD API filter" if it is present on your system.” –<http://pvr.sichbo.ca/>

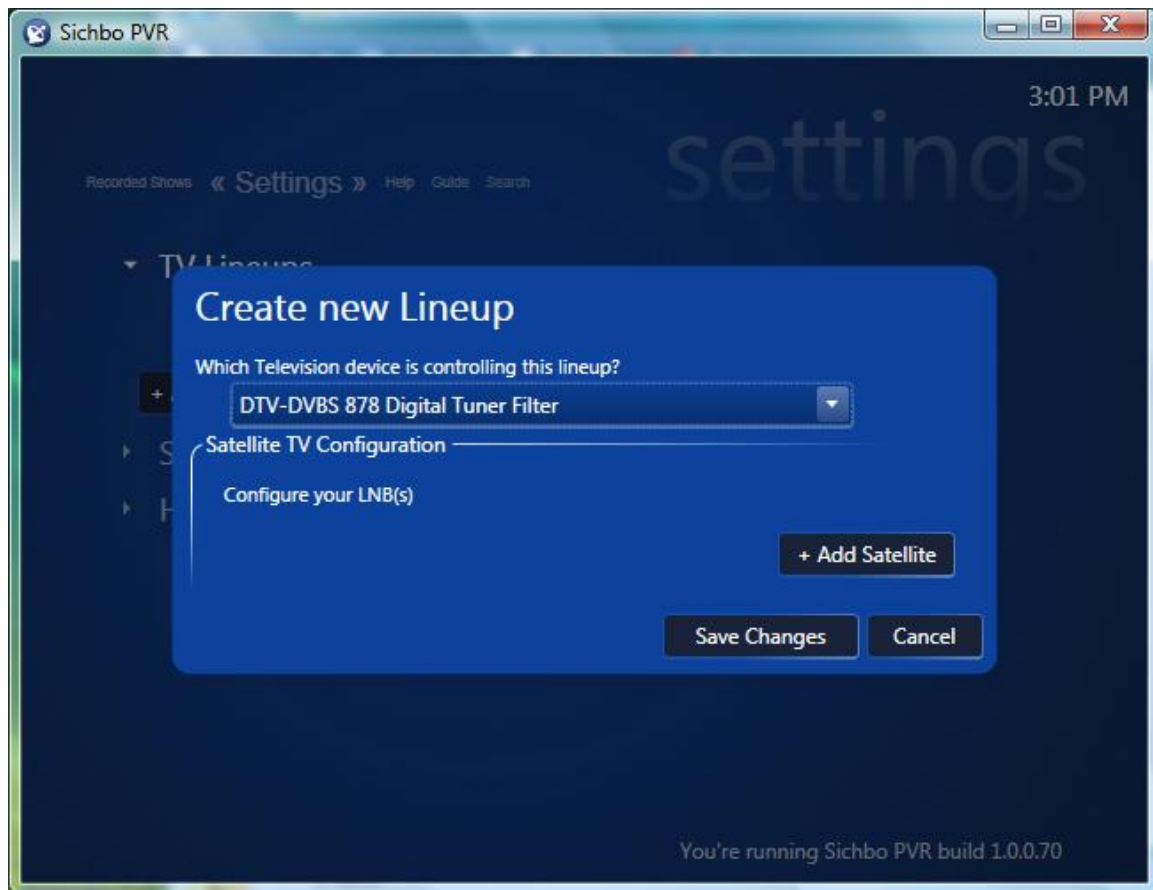
Let us get started

### Setup:

The first time you open Sichbo PVR you are greeted by the author.

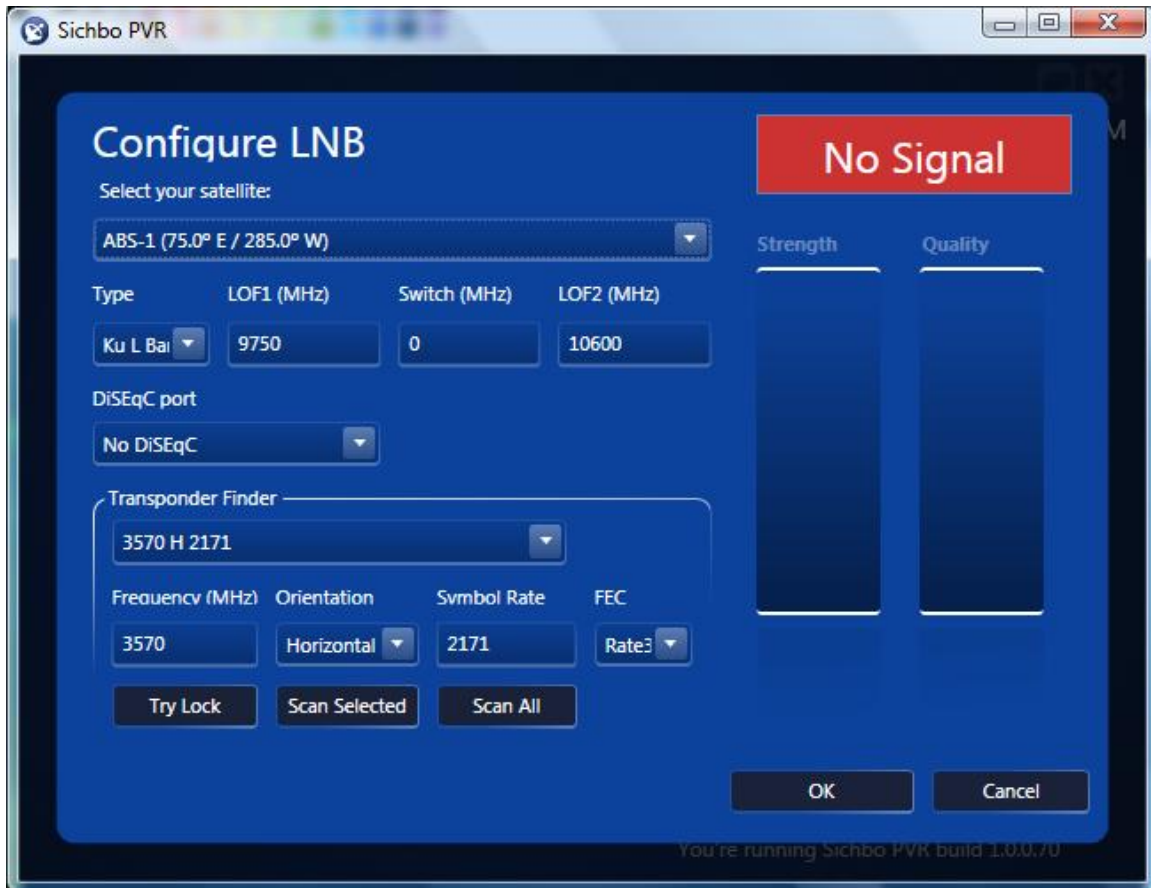


Go ahead and click the “Continue” button.

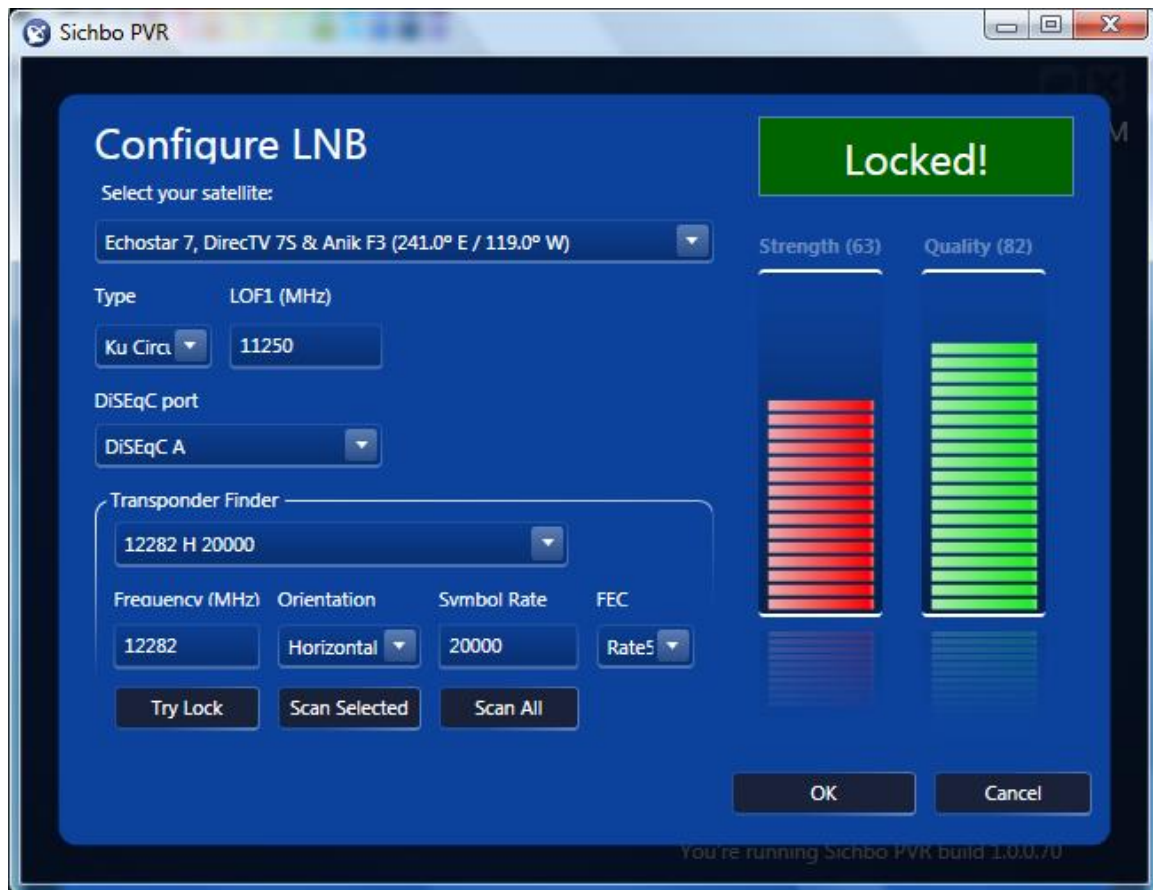


Next you will be prompted to create a new lineup. From the drop-down list select your tuner card. (Please note that if Sichbo PVR fails to recognize your tuner card you will be prompted to send a device report for further evaluation. At this point you will have to wait for the author to support your specific card.)

Now click the "Add Satellite" button.

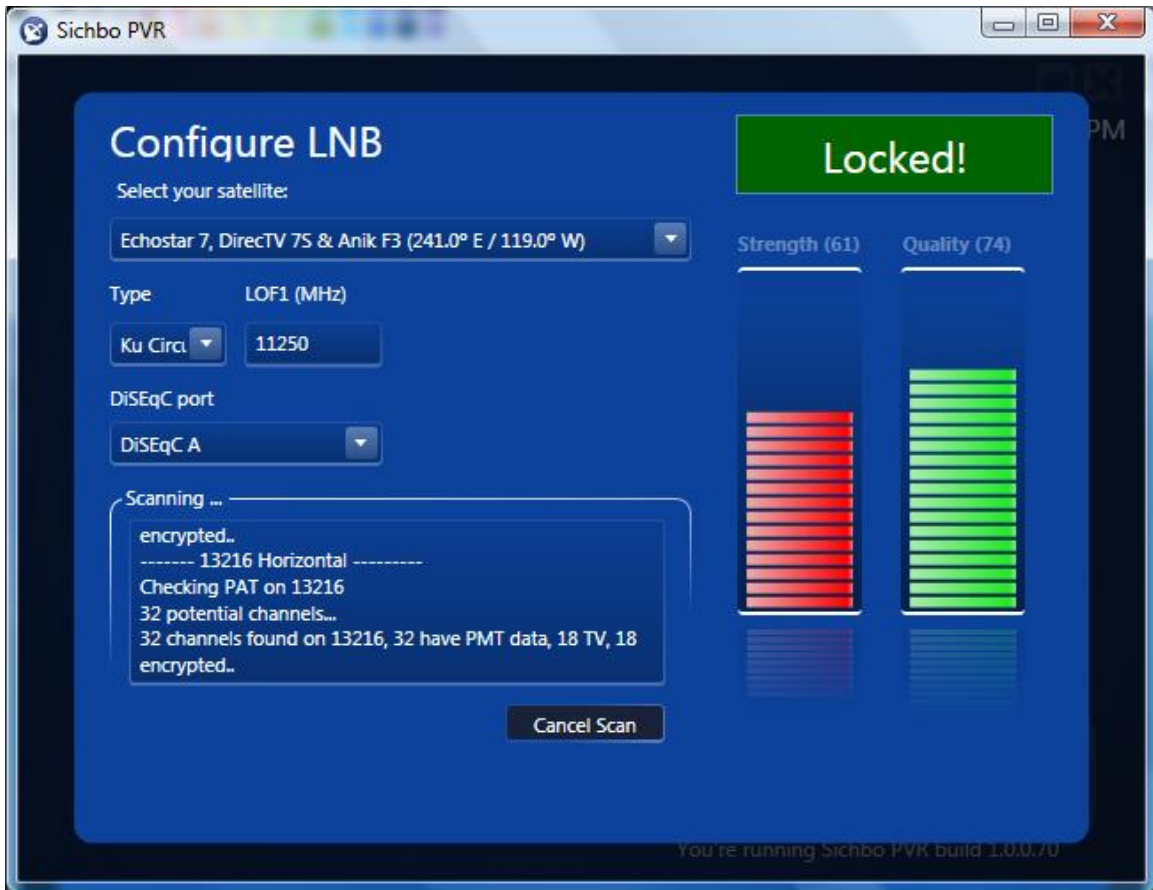


The next screen is where you select the satellite(s) you will be tuning as well as the type of lnb being used and which DiSEqC port to switch to if a DiSEqC switch is being used in your particular DVB setup.

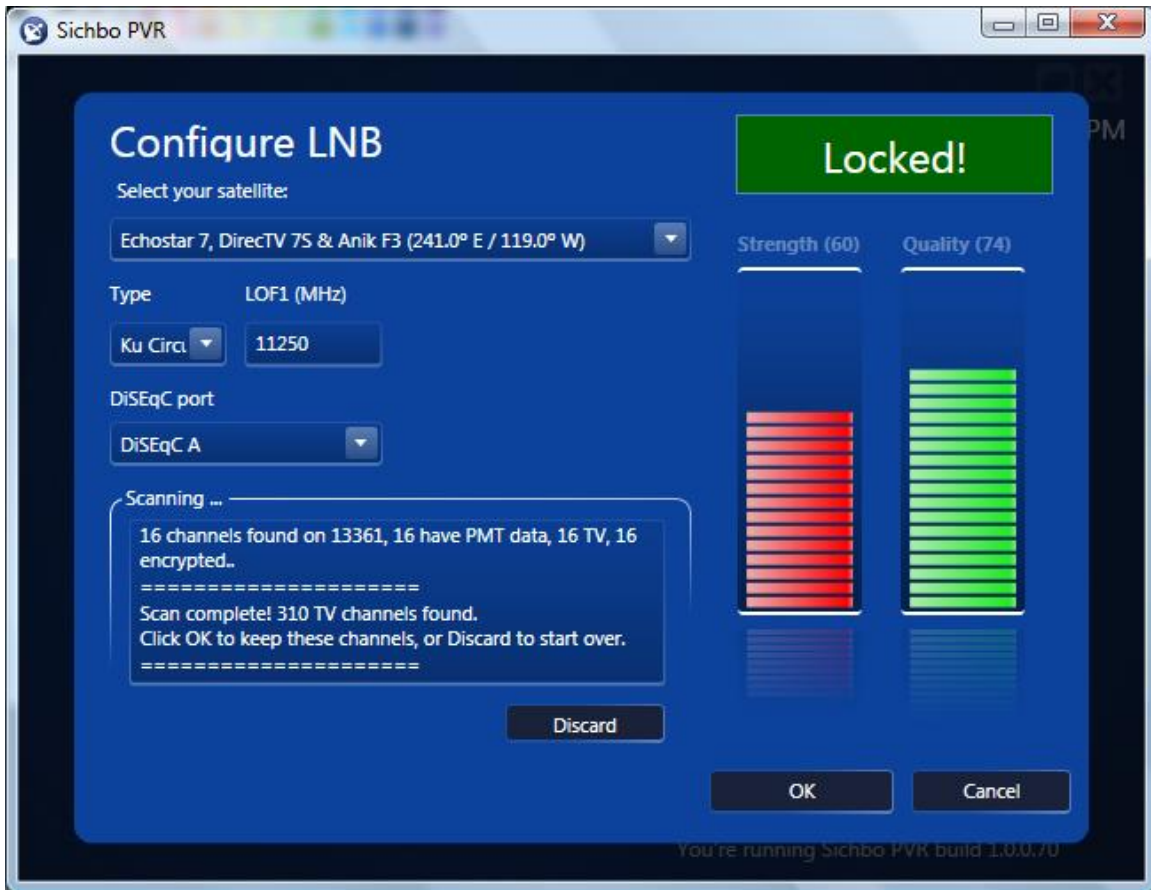


Once you setup your hardware correctly in Sichbo PVR it is time to try and lock a transponder. Select any transponder in the drop-down list and click “Try Lock”. You should get a lock at which point the strength and quality meters will appear.

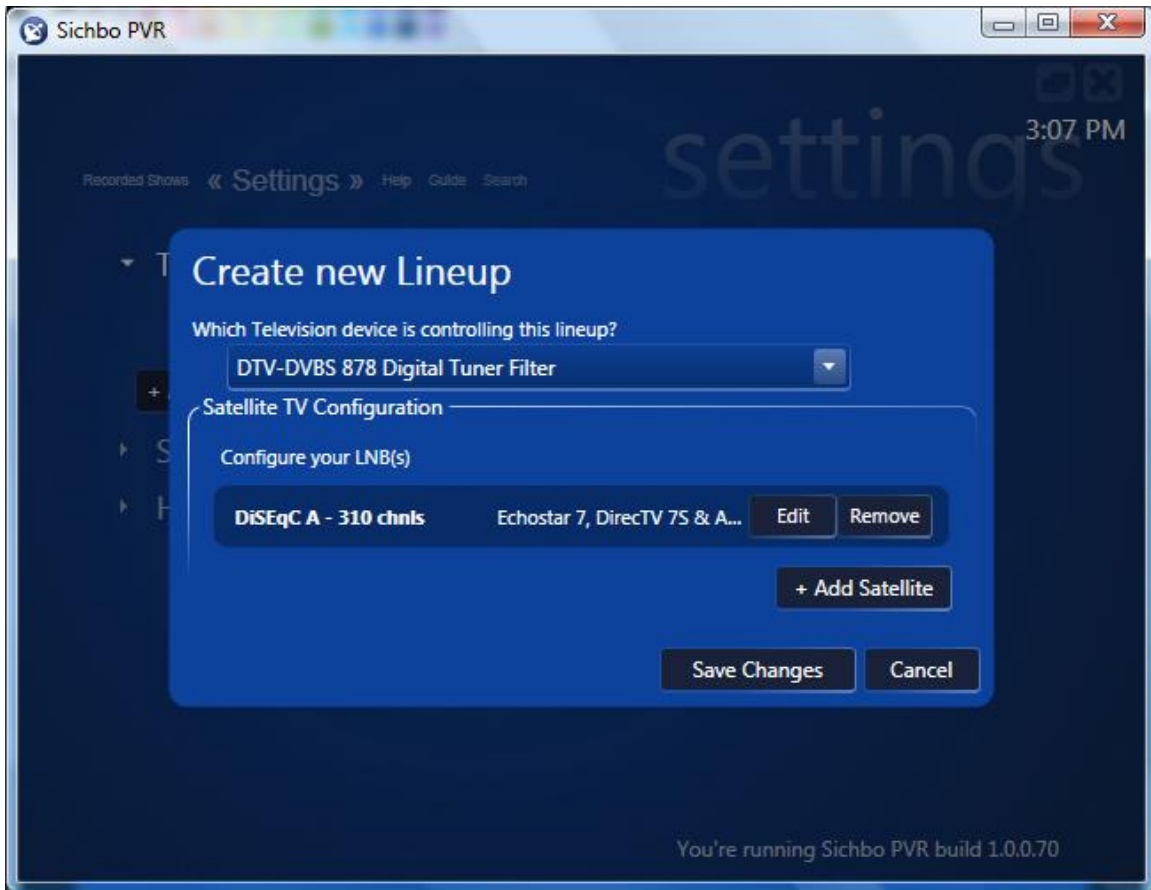
If at this point you get a “LOCK” go ahead and click the “Scan All” button. Alternatively you can click the “Scan Selected” button to scan just transponder you selected in the drop-down list.



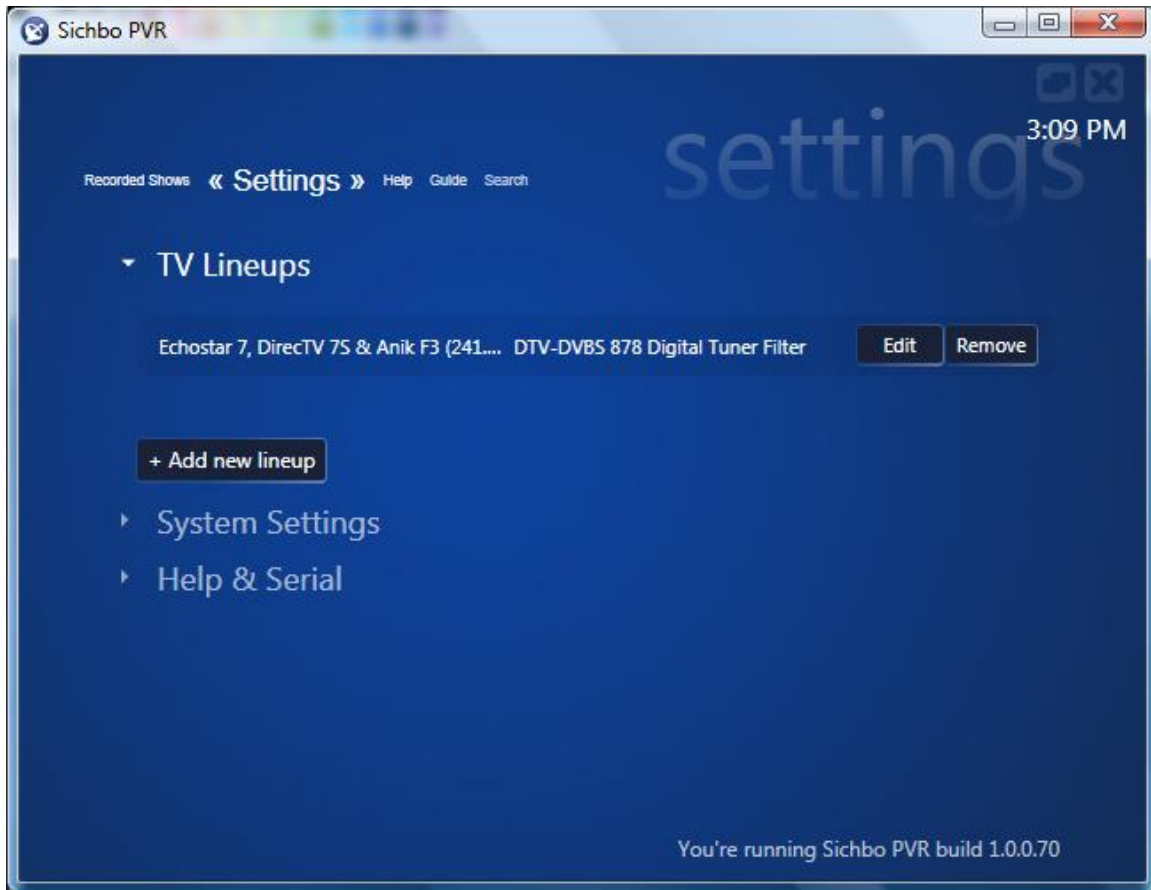
Whether you clicked “Scan All” or “Scan Selected” the next screen will show the scanning activity.



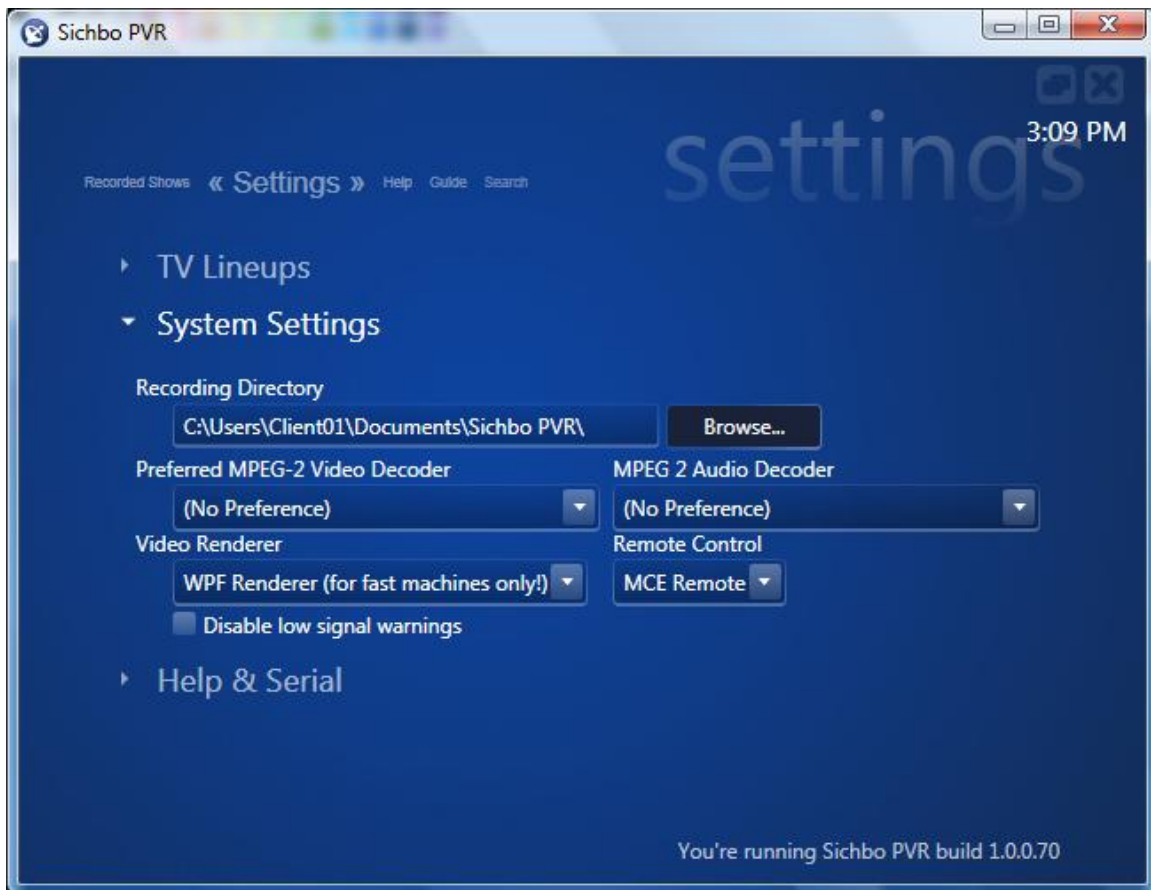
Upon completion of scanning click the “OK” button. Alternatively you can click the “Discard” button to disregard the recent scan.



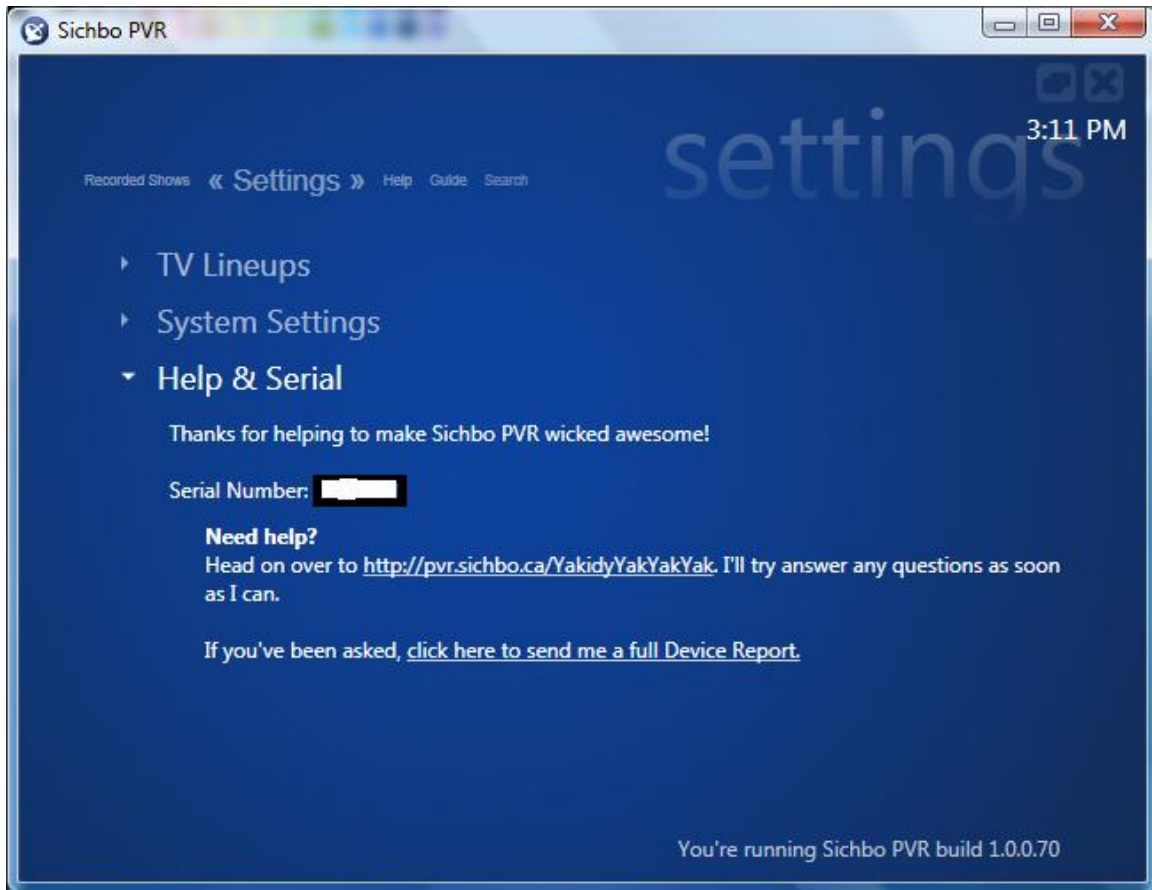
At this point you have successfully scanned in your channels. To finish it click the “Save Changes” button.



Congratulations you now have a TV lineup. At this point you can start watching TV. You can also click the “Edit” button to add another satellite to your already awesome TV lineup. Just repeat the previous steps. Or if you have another tuner installed you can click the “Add new lineup” button to create a lineup for the other tuner. However before we go that far let us first look at some alternative configurations. So go ahead and click “System Settings”.



Here you can specify a recording directory, decoders, a renderer and a remote control. The author of Sichbo PVR recommends using Nvidia decoders. You also have the choice to disable low signal warnings by placing a check in the box. Finally click “Help & Serial”.

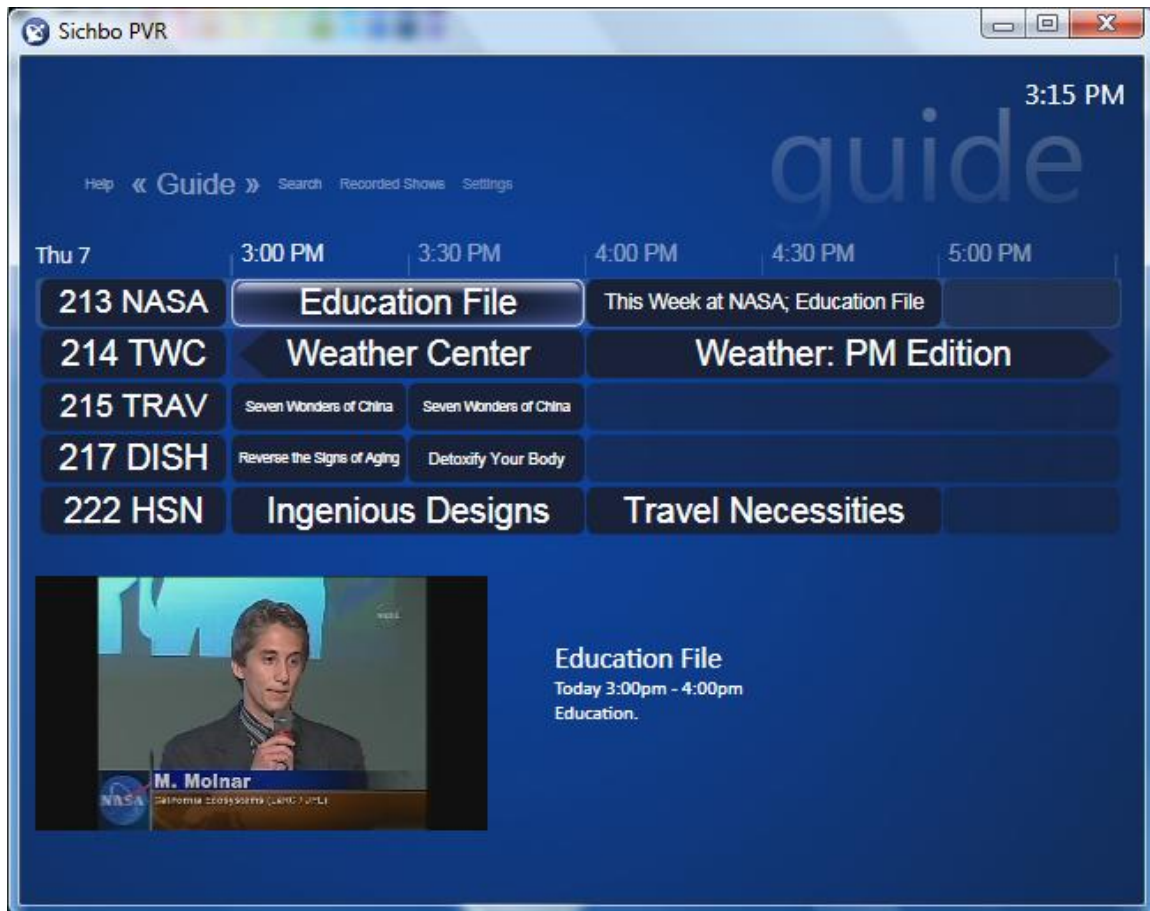


It is at this point where you can become awesome by clicking [here](#) at which point you can obtain a Serial number from the author to enable the recording feature of Sichbo PVR. There is also a link to the forums and a link to a device report which is used by the author of Sichbo PVR for troubleshooting purposes. Next click on "Help" at the top of the screen, next to "Settings".



This page shows the different input devices supported by Sichbo PVR and their respective functions. Click on the device you selected in the “System Settings” to see which buttons are used to manipulate Sichbo PVR. Alternatively if you have an input device that is not supported yet there is still hope. Head on over [here](#). You may be able to help yourself out. Do not be shy though. Share whatever you come up with. It will be much appreciated.

Next click on “Guide” at the top of the screen next to “Help”.



Really the only thing to say here is SWEET. It is best to look again at the remote you selected or the keyboard shortcut keys under the “Help” menu to understand how to manipulate Sichbo PVR at this point. If you tune to a channel on a transponder that carries the extended EPG for the two main North American providers Sichbo PVR will parse them. That is right a program that actually parses the 9-day guide of both providers. Please do not ask which transponder carries the extended guide. It is best to find out how to do it yourself or search some other forum. After all it changes sometimes. Also if you have not noticed yet, Sichbo PVR only puts video channels in the guide. Audio only channels are not available through Sichbo PVR. (That could change.) Next click on “Search” at the top of the screen next to “Guide”.



Another cool feature is Sichbo Pvr's searching ability. Use your remote like any telephone to enter a query. As hinted at the bottom-right of the screen you can record or queue programming from the search. This can also be done with a remote by pressing the appropriate keys.

Next click on "Recorded Shows" at the top of the screen next to "Search"



Another one of those “SWEET” moments here. Anything that gets recorded can be played back right in Sichbo PVR. After going to the “Recorded Shows” menu a preview of recorded shows appear. Just select whatever you are in the mood for and enjoy.



Back at the “Guide” menu I wanted to share the ability to mark a program for either recording or queue. Just select the appropriate button for the input device you are using while the program is highlighted.

That wraps up this walkthrough. If you have any comments please do so, or any questions please ask. Your input will only make this program better, if that is even possible.